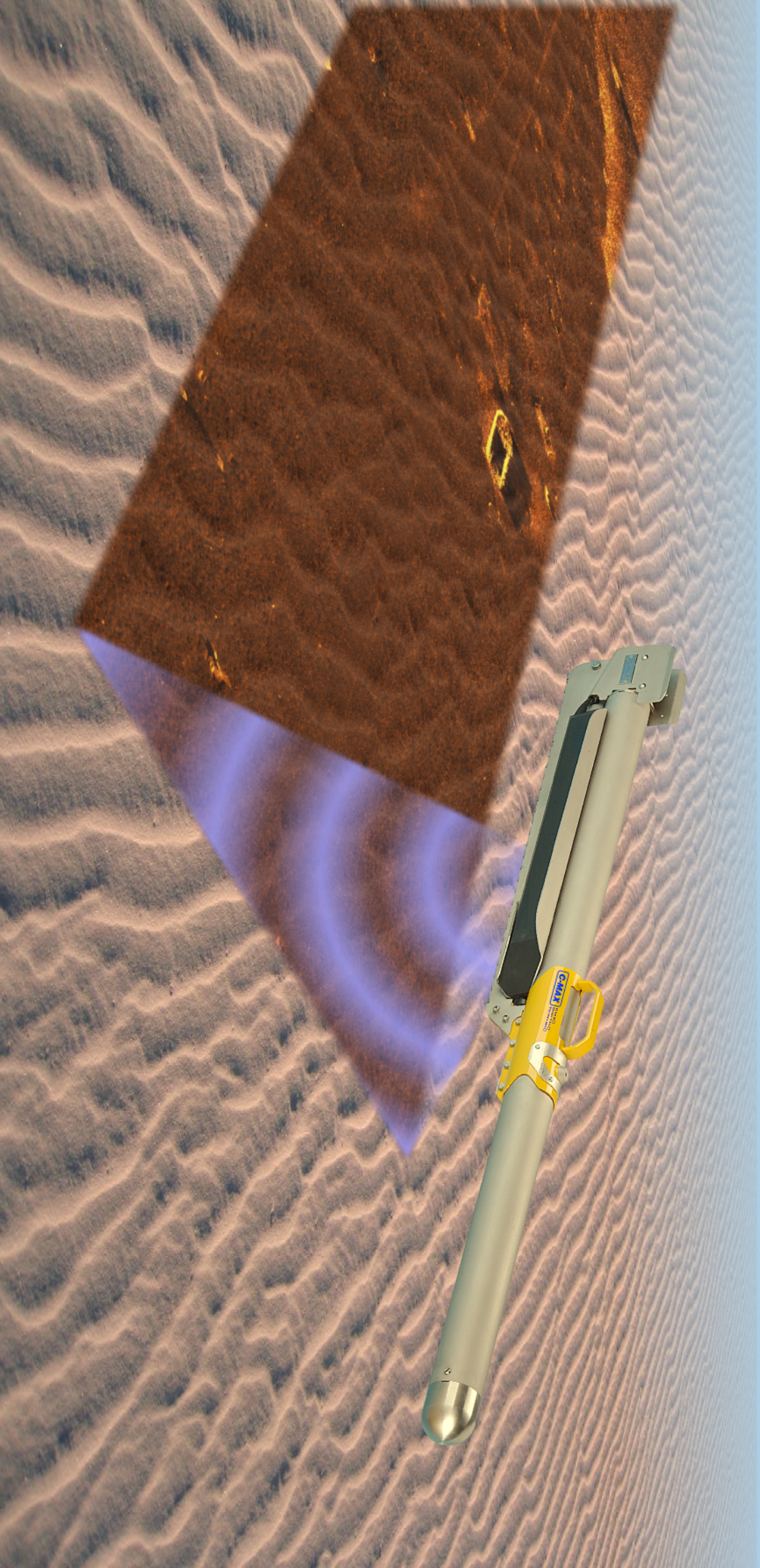


The CM2 Sidescan Sonar System...□

High definition .. Versatile .. Easy to use .. Robust□



C-MAX

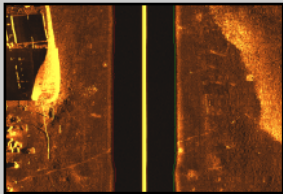
WWW.CMAXSONAR.COM

System with the CM2's standard STR topside unit and the optional compact winch

The STR connects to the PC via a simple USB link.

The CM2 24V winch features an overload clutch and soft start, and carries a 300m stainless steel tow cable.

Polypropylene transit cases are available for all equipment.

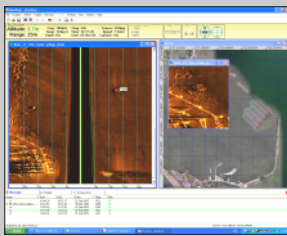


High definition images

- choice of dual frequency 325/100kHz or 780/325kHz towfish
- ultra-low-noise towfish electronics
- digital towfish and 2-wire telemetry; no crosstalk or loss of quality
- enhanced immunity to unwanted surface reflections

Versatile

- wide range of towing options, including the compact CM2 winch
- optional wing depressor for up to 50% increased towfish depth
- optional heading, roll, pitch and depth sensors
- ROV and AUV versions
- supports third-party alternatives to MaxView



Easy To Use

- intuitive, full-featured MaxView software
- all MaxView facilities, except real-time acquisition, available licence-free
- automatic towfish gain control and altitude measurement
- transducer beam depression switched in seconds, without tools
- towfish design allows easy launch and recovery, even with depressor fitted

Robust

- stainless steel towfish rated to 2000m
- safety mechanism to save the towfish if it strikes an obstruction
- rugged topside electronics with all stainless steel case
- optional IP66 topside
- 5 year warranty*



Open-boat system with waterproof topside and kevlar-protected cable

The C-Shell provides waterproof (IP66) integrity for the topside electronics and its connections.

The hydrodynamics and mass distribution of the towfish give the stability necessary for high-resolution imaging.

The towfish and 50m kevlar-coax cable are easily handled in small craft.